

EASY VALLEY

FITTING GUIDE

FEATURES AND BENEFITS

- ✓ Unique dry valley system for slates.
- ✓ Anti-theft design with no scrap value.
- ✓ Low maintenance system; quick and easy to install.
- ✓ No streaking and staining.
- ✓ Can be used with all fibre cement and natural slates up to 10mm thick.

Made from high grade plastic, Permavent EASY VALLEY utilises Permavent's unique super seal technology to provide a comprehensive waterproofing solution at pitches as low as 12 degrees.

INSTALLATION GUIDANCE

Lay a full strip (1000mm wide) of Permavent underlay membrane, laid up the centre of the valley. Cross additional layers of membrane from the main roof field area in a traditional manner.

Use a small piece of 25mm x 50mm batten length ways in the centre of the valleys to act as a 25mm spacer. Install 4 battens vertically up the valley and neatly mite horizontal slating battens into the junction (Fig 1). Permavent EASY VALLEY can be installed in both standard or counter-battened designs.

Make a 'V' cut in the lower end section of the EASY VALLEY unit and oversail the eaves by minimum 50mm. When aligned correctly, this allows the rain water to run off into the gutter. Position the EASY VALLEY centrally up the valley on top of the 4 x vertical battens. To keep it in position, you can secure the edge with a small amount of clout nails (Fig 2).

To extend EASY VALLEY it should be lapped by a minimum 100mm with the next length. The upper section has the central channel removed for this purpose. Using a sharp blade, remove all the rubber seals to the same length.

Begin cutting and laying the valley slates using a traditional mitre methods. Fix the slates into position by nailing through the outer edge of the EASY VALLEY (this fixing area surrounds the smaller rubber seals only). Continue to slate up along the valley as normal (Fig 3).

Valley Junctions: A minimum 300mm Code 4-lead saddle should be dressed over the mitred sections of the EASY VALLEY and ridge if necessary. Alternatively, the lead saddle may be dressed over the slates or tiles by 150mm.

DO NOT make any holes within the central region (between the 2 inner seals)



Fig 1.



Fig 2.

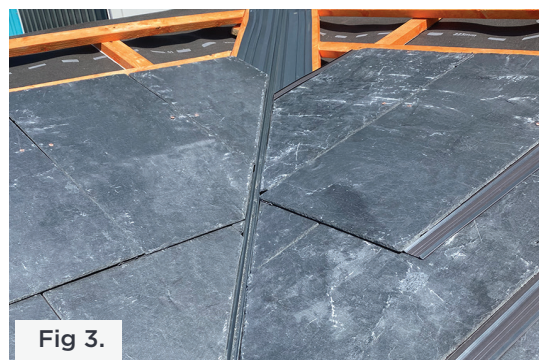
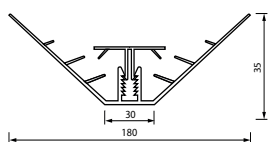


Fig 3.

EASY VALLEY DIMENSIONS AND PACK QUANTITIES



EASY VALLEY: 3m length, pack of 10
EASY VALLEY CAP: 1m length, pack of 10
EASY VALLEY PLUS: 3m length, pack of 10

CONTACT INFORMATION

For product, technical and sales support please contact Permavent on:
Tel: (+44) 1305 766 703.
Email: enquiries@permavent.co.uk.



Please scan this QR code to find the contact information for your regional Permavent Representative.

PERMAVENT

PERMAVENT.CO.UK

11 Cumberland Drive, Granby Industrial Estate, Weymouth, DT4 9TB.

EASY VALLEY CAP

Make sure the central channel of the valley is free from all debris.

Position the cap over the central channel.

Push the cap's hooked feet into the grooves of the central channel and press down until the cap's seals are flush with the flat surface of the slates.

Screw down the attached bolt at the top end to lock the cap in position (Fig 4).

The EASY VALLEY CAP has a rebate at the lower end and this should overlap a previously installed cap and cover the bolt head.

There should be a slight gap between each cap within this rebated section to allow for thermal expansion.

NB: The caps should never be butted together end to end (especially in cold weather).



EASY VALLEY PLUS

Permavent EASY VALLEY is compatible with natural and fibre-cement double-lapped slates. When installing thicker roofing slate, you can insert EASY VALLEY PLUS to extend the height of the EASY VALLEY CAP.

This is fitted into the EASY VALLEY tray channel before the EASY VALLEY CAP, with the cap then inserted into the grooves of the EASY VALLEY PLUS attachment.



Please get in touch for installation and technical support prior to installing EASY VALLEY on a complex roofing project and/or for complex slating techniques.