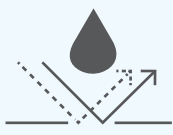


ENVIROTECT®

FZT FLOOR CASSETTE MEMBRANE

Envirotect FZT is a vapour permeable, airtight floor membrane designed to maintain continuity of the air barrier at ground and intermediate floor junctions. By combining high vapour permeability with effective air sealing and resistance to water penetration, it controls moisture transfer and reduces the risk of interstitial condensation within the floor zone.

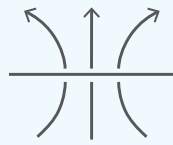
This integrated performance provides a reliable solution for managing airtightness and moisture at critical floor-to-wall interfaces.



Resistant to water penetration



UV and heat resistant



High vapour permeability

STA | STRUCTURAL
TIMBER
ASSOCIATION
Member

**UK
CA** **CE**

Resistance to water penetration, Class	W1
Water vapour transmission properties (Sd), m	0.02
Nail tear resistance to EN12310-1 (MD), N/50mm	≥50
Nail tear resistance to EN12310-1 (CD), N/50mm	≥50
Tensile strength to EN12311-1 (MD), N/50mm	260
Tensile strength to EN12311-1 (CD), N/50mm	170
Flexibility at low temperature to EN1109:2013	-40°C
Weight, gsm	90

Independently tested.

Exceeds BS 5250, BMTRADA & NHBC requirements for vapour permeability.



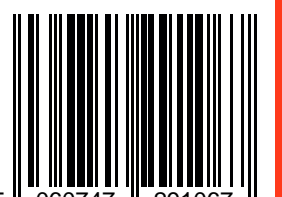
Issue 04.26

1.5x50m
7.0kg

PERMAVENT

For installation guides on all our products, please visit our website PERMAVENT.CO.UK

A: 11 Cumberland Drive, Cranby Industrial Estate, Weymouth, Dorset, DT4 9TB T: +44 (0) 1305 766 703 E: enquiries@permavent.co.uk



5 060747 291067

FITTING INSTRUCTIONS

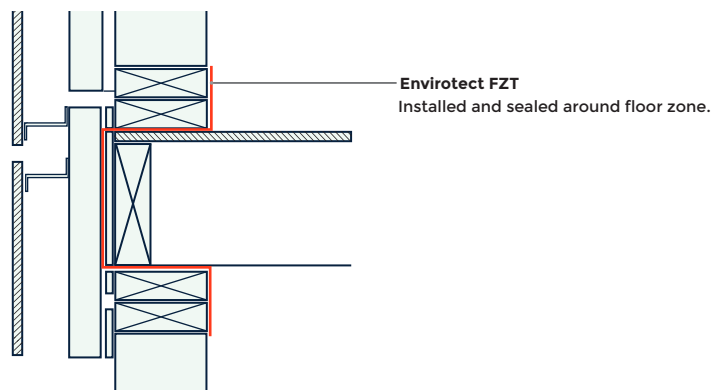
Envirotect FZT is fixed to the floor cassette leaving an equal overhang to be attached to both ground floor and first floor panels and repeat for multiple storeys as required.

The membrane should be sealed to the internal AVCL using Permavent Permatac High Tack Sealing Tape to create an airtight seal between the two membranes.

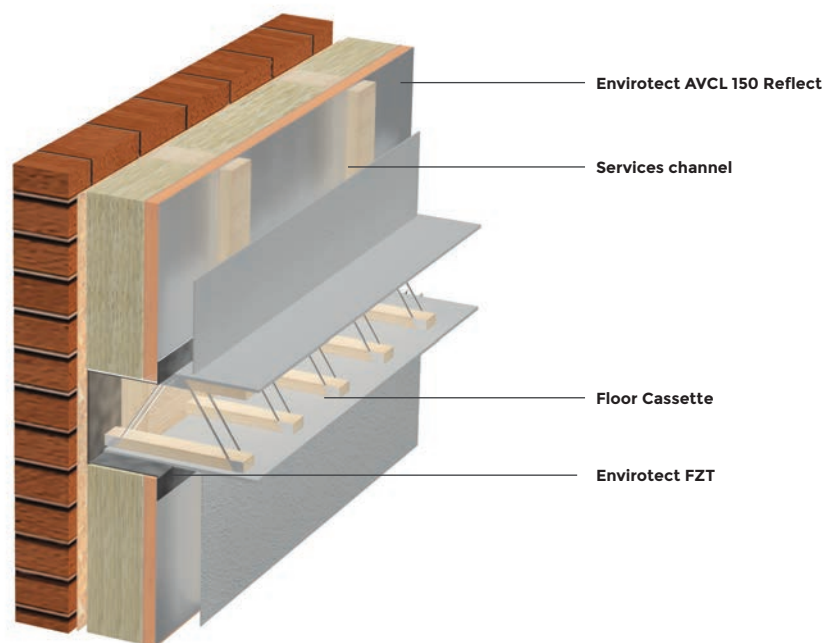
Care should be taken when installing the floor cassette to maintain the integrity of the material. Small puncture areas can be repaired using Permavent Permatac High Tack Sealing Tape.

Envirotect FZT Application:

- ▼ Fig. 1 Junction between intermediate floor cassette and wall



- ▼ Fig. 2 Illustration showing overlap of floor cassette membrane with internal wall AVCL



The information contained within the installation advice document provided by Permavent Limited is for general information and provided as guidance only. Permavent Limited provide no warranty and accept no liability for the information contained within this document which is published in good faith. The suitability of the product is the responsibility of the installer / specifier. Permavent Limited advise following the installation guidelines and the relevant codes of practice which are correct at the time of publishing. Permavent Limited reserve the right to alter product specifications without prior notice, in line with the company policy of continuous development and improvement.

FZT
FLOOR CASSETTE MEMBRANE

ENVIROTECT®