

SAFESHIELD

XT REFLECT FIRE SAFE A RATED MEMBRANE

Permavent Safeshield XT Reflect is an extremely vapour permeable wall membrane with a low emissivity reflective surface and class A2-s1,d0 fire classification.

Safeshield XT Reflect is suitable for all walling applications and can be used safely in high rise and high risk buildings (e.g. schools, hospitals, care homes) to prevent the risk of fire spread.

Safeshield XT Reflect is also suitable for timberframe / modular off-site construction.

The unique composition of Safeshield XT Reflect resists the spread of fire across the cavity of the building.

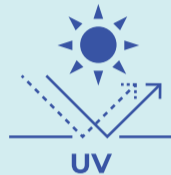
Safeshield XT Reflect can be installed onto any substrate.



Class A fire rated product A2-s1,d0



Superior W1 head of water resistance



High UV resistance



Enhanced thermal performance



Thermal resistance R, m ² K/W	0.67*
Reaction to fire to EN 13501-1	A2-s1, d0
Resistance to water penetration, Class	W1
Water vapour transmission properties (sd), m	0.08
Nail tear resistance to EN12310-1 (MD), N/50mm	580
Nail tear resistance to EN12310-1 (CD), N/50mm	450
Tensile strength to EN12311-1 (MD), N/50mm	3000
Tensile strength to EN12311-1 (CD), N/50mm	3200
Flexibility at low temperature to EN1109:2013	-40°C
Weight, gsm	430
Thickness, mm	0.43

*when facing >20mm still airspace

Independently tested to EN 13501-1.

Approved document B compliant for buildings over 18m England & Wales / 11m in Scotland under section 2.

Exceeds BS5250, BMTRADA & NHBC for vapour permeability.

1.2x50m
26kg

PERMAVENT

For installation guides on all our products, please visit our website PERMAVENT.CO.UK

A: 11 Cumberland Drive, Granby Industrial Estate, Weymouth, Dorset, DT4 9TB T: +44 (0) 1305 766 703 E: enquiries@permavent.co.uk



5 060747 290923

FITTING INSTRUCTIONS

XT REFLECT
FIRE SAFE A RATED MEMBRANE

Unroll Safeshield XT Reflect and fix directly to the sheathing or insulation. Safeshield XT Reflect should be secured to the substrate using the appropriate fixings. Fixings should be no more than 600mm horizontally and 500mm vertically (Figure 1). On a timber substrate stainless steel staples should be used. On a masonry or SFS substrate the membrane should be mechanically secured with an appropriate fixing that features an EDPM type washer.

All laps around window or door openings should be sealed using Safeshield A1 Reflect high tack adhesive tape. Vertically the membrane should overlap by at least 150mm and with the joints in a staggered pattern. Safeshield XT Reflect should be installed with a least a 100mm lap horizontally starting at the bottom of the panel working up to ensure the upper layer covers the lower layer, to protect the substrate from water runoff (Figure 2).

Fixing brackets for cladding / wall ties should be installed as per manufacturer's instructions and care should be taken around the interface between the membrane and fixing bracket. Where cavity barriers are installed in the horizontal position the Safeshield XT Reflect membrane should be lapped over the DPC tray to allow water run-off.

When using Safeshield XT Reflect as the external airtightness layer overlaps and penetrations through the membrane should be sealed using Safeshield A1 Reflect high tack adhesive tape.

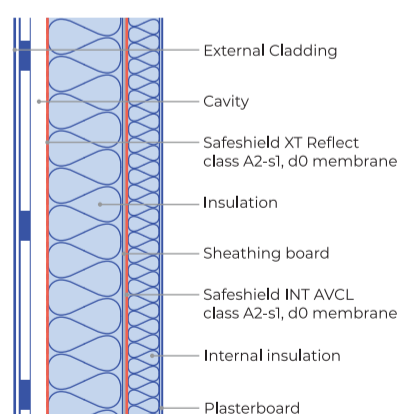
The composition of Safeshield XT Reflect provides the membrane with a high level of UV resistance and a long exposure time in both summer and winter.

Care should be administered during installation to prevent any damage to the membrane. Small puncture areas less than 50mm can be repaired using Safeshield A1 Reflect high tack adhesive tape. Should the puncture or tear exceed 50mm then the repair should be made using new membrane and taping around the inserted section. When using Safeshield XT Reflect as the external airtightness layer overlaps and penetrations through the membrane should be sealed using Safeshield A1 Reflect high tack adhesive tape.

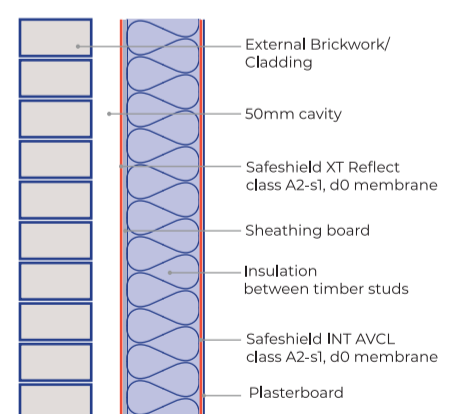
Safeshield XT Reflect should be stored in dry conditions in the upright position.

Safeshield XT Reflect Applications:

Cladding



Timberframe



The information contained within the installation advice document provided by Permavent Limited is for general information and provided as guidance only. Permavent provide no warranty and accept no liability for the information contained within this document which is published in good faith. The suitability of the product is the responsibility of the installer / specifier. Permavent Limited advise following the installation guidelines and the relevant codes of practice which were correct at the time of publishing. Permavent Limited reserve the right to alter product specifications without prior notice, in line with company policy of continuous development and improvement.

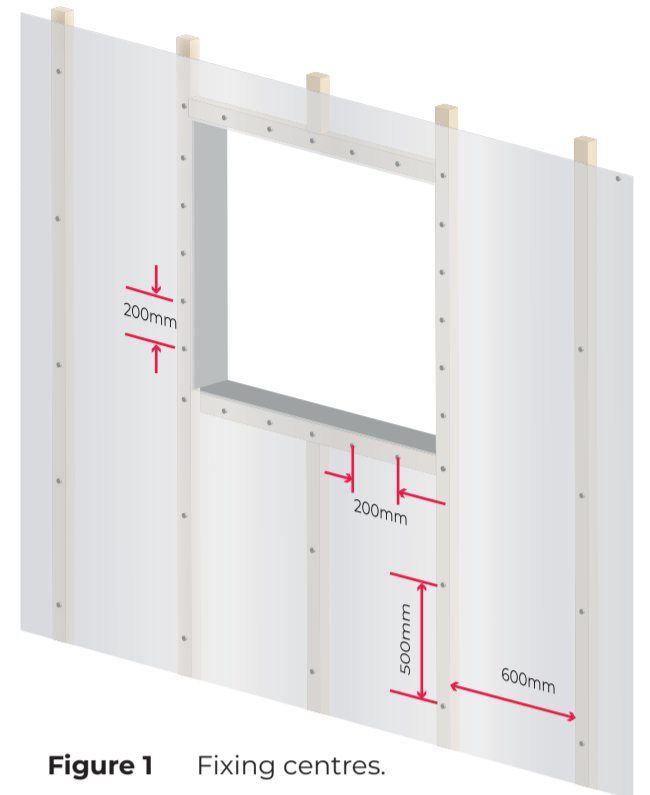


Figure 1 Fixing centres.

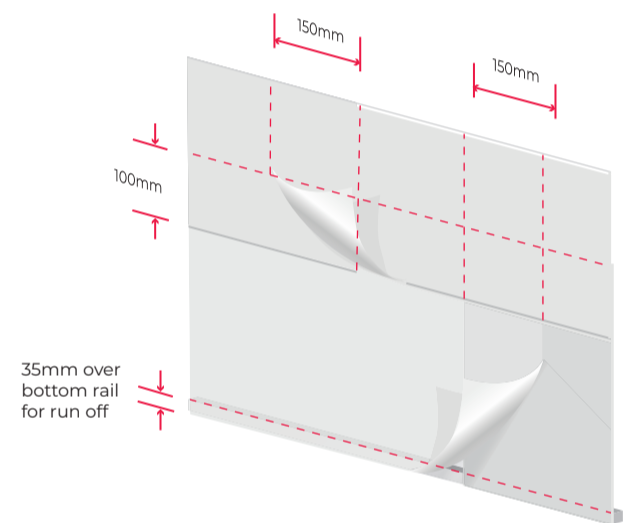


Figure 2 Vertical & horizontal laps.