

# ENVIROTECT®

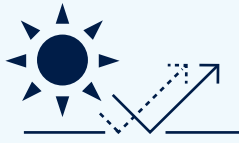
## AVCL 150 REFLECT AIR & VAPOUR CONTROL LAYER

Envirotect AVCL 150 Reflect is a spunbond non-woven, polypropylene construction membrane with a high purity aluminium surface. Envirotect AVCL 150 Reflect is designed and developed for use in timberframe, light steel gauge, modular, and leisure building applications. Envirotect AVCL 150 Reflect delivers a robust approach to airtightness; enhancing the overall thermal performance of the building structure. This significantly reduces the risk of interstitial condensation in accordance with BS520:2021 Management of Moisture in Buildings.

Envirotect AVCL 150 Reflect has been developed and manufactured by Permavent Ltd using the latest technologically advanced methods available. Envirotect AVCL 150 Reflect provides a high specification, class leading walling membrane solution.



Thermal resistance,  
m<sup>2</sup>K/W



Low emissivity  
surface

STA | STRUCTURAL  
TIMBER  
ASSOCIATION  
Member

UK  
CA

CE

|  |        |
|--|--------|
| Thermal resistance R, m <sup>2</sup> K/W       | 0.79*  |
| Resistance to water penetration, Class         | W1     |
| Water vapour resistance, MNs/g                 | >7,500 |
| Nail tear resistance to EN12310-1 (MD), N/50mm | 220    |
| Nail tear resistance to EN12310-1 (CD), N/50mm | 230    |
| Tensile strength to EN12311-1 (MD), N/50mm     | 240    |
| Tensile strength to EN12311-1 (CD), N/50mm     | 190    |
| Flexibility at low temperature to EN1109:2013  | -40°C  |
| Weight, gsm                                    | 150    |
| Emissivity                                     | 0.02   |

\*when facing >20mm still airspace.

Independently tested: UKAS accredited.

1.5x50m

12kg

# PERMAVENT

For installation guides on all our products, please visit our website [PERMAVENT.CO.UK](http://PERMAVENT.CO.UK)

A: 11 Cumberland Drive, Cranby Industrial Estate, Weymouth, Dorset, DT4 9TB T: +44 (0) 1305 766 703 E: [enquiries@permavent.co.uk](mailto:enquiries@permavent.co.uk)



5 060747 291043

# FITTING INSTRUCTIONS

## AVCL 150 REFLECT AIR & VAPOUR CONTROL LAYER

Unroll Envirotec AVCL 150 Reflect to the required length.

Starting at the floor level and working upwards, fix into position using either staples or clout nails taking care that the membrane is flat against the substrate of studwork fixing at 600mm centres horizontally and 500mm centres vertically apart respectively (Figure 1).

Horizontal joints in the membrane must overlap by at least 100mm and sealed using Permavent Permatac High Tack Reflective Tape to ensure an airtight seal is achieved. Vertically the membrane should overlap by at least 150mm with the joints in a staggered pattern (Figure 2).

Envirotec ACVL 150 Reflect should be cut neatly around all window and door openings and sealed using Permavent Permatac High Tack Reflective Tape to provide an airtight seal around window and door junctions.

Any pipe or cable penetrations should be sealed around the cable or pipe using Permavent Permatac High Tack Reflective Tape.

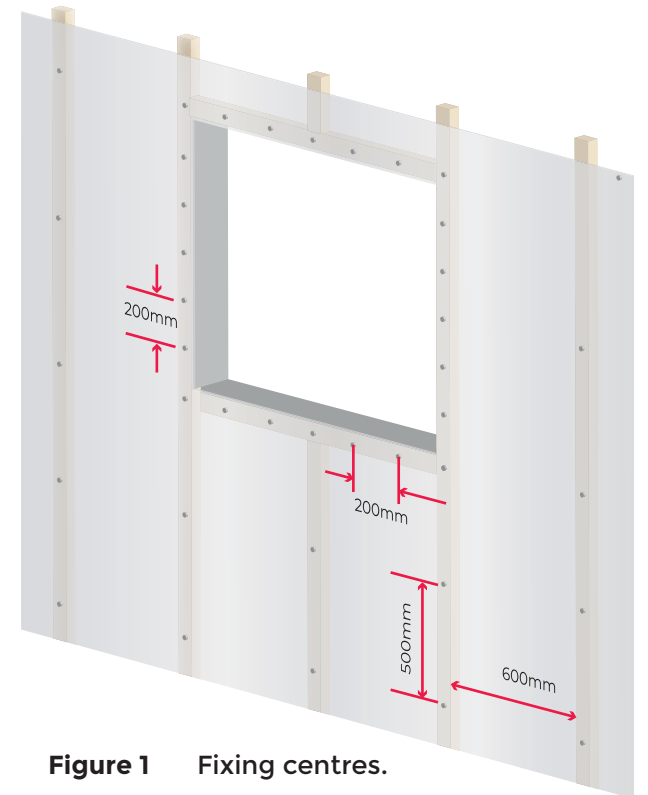


Figure 1 Fixing centres.

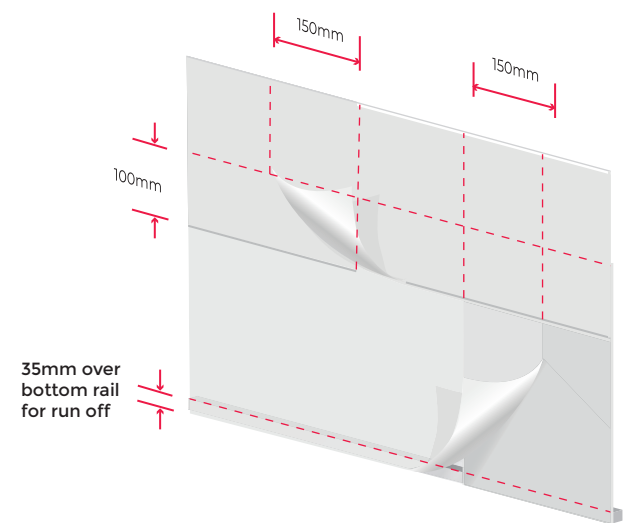
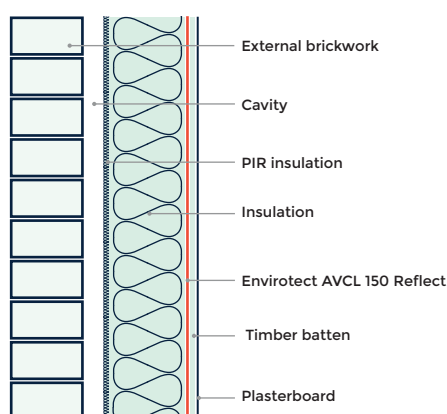


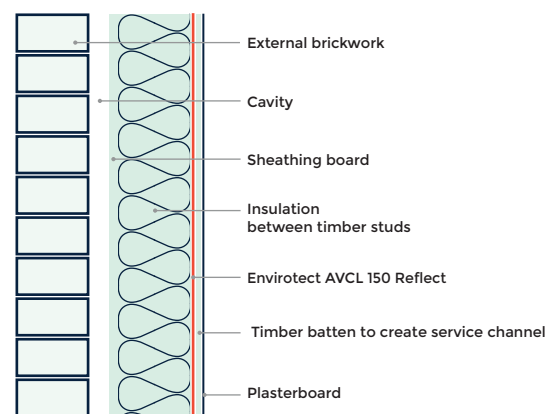
Figure 2 Vertical & horizontal laps.

### Envirotec AVCL 150 Reflect Applications:

#### ▼ Masonry Construction



#### ▼ Timber Frame Construction



The information contained within the installation advice document provided by Permavent Ltd is for general information and provided as guidance only. Permavent Ltd provide no warranty and accept no liability for the information contained within this document which is published in good faith. The suitability of the product is the responsibility of the installer / specifier. Permavent Ltd advise following the installation guidelines and the relevant codes of practice which are correct at the time of publishing. Permavent Ltd reserve the right to alter product specifications without prior notice, in line with the company policy of continuous development and improvement.

# ENVIROTECT®