



# DIAMOND

GRP ROOFING SYSTEM

## PRODUCT GUIDE



## DIAMOND RESIN

Forms the GRP laminate with the Chopped Strand Mat (CSM).

10kg (5.75m<sup>2</sup>)  
20kg (12.25m<sup>2</sup>)

GRPRESIN10  
GRPRESIN20



## DIAMOND TOPCOAT

Provides the finished surface appearance of the GRP flat roof.

10kg (17.2m<sup>2</sup>)  
20kg (36.8m<sup>2</sup>)

GRPTOP10  
GRPTOP20



## FIRE RETARDANT DIAMOND TOPCOAT

Fire retardant topcoat for the roofs finished appearance (BS476:3 F.AC)

20kg (36.8m<sup>2</sup>)

GRPTOPFR



## CSM

Chopped Strand Mat: forms the GRP Laminated with the Resin.

450  
600

CSM45033  
CSM60033



## CSM BANDAGE

For reinforcing corners and trim joins.

75mm x 75m

CSMBAN100



## DETAIL TISSUE

For fine corner and join detailing.

150mm x 25m

GRPTISSUE



## CATALYST

Hardener for resin and topcoat.  
Summer or Winter grade available.

0.5L  
1L  
5L

GRPCAT0.5/GRPCAT0.5S  
GRPCAT1/GRPCAT1S  
GRPCAT5/GRPCAT5S



## ACETONE

Used for general cleaning and preparation.

5L  
25L

GRPACE5  
GRPACE25



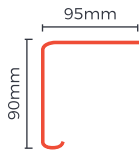
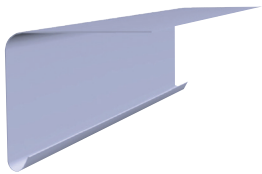
## MIXING BUCKET

Bucket for mixing resin and topcoat with catalyst.

With measurement guide.

10L

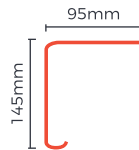
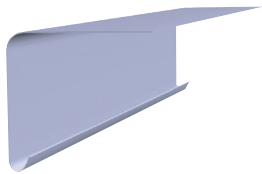
GRPBUCKET



## A200 - DRIP TRIM

Fascia drip trim for drainage from the roof edge into the gutter.

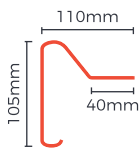
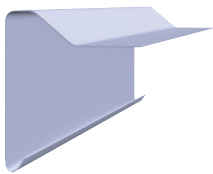
A200



## A250 - DRIP TRIM

Deep fascia drip trim for drainage from the roof edge into the gutter.

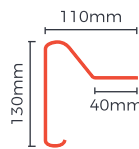
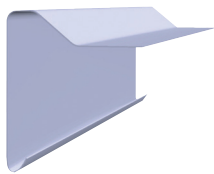
A250



## B230 - RAISED EDGE TRIM

Raised edge trim that directs water away from the edge and prevents water run off.

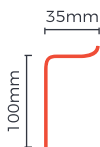
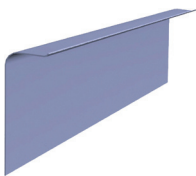
B240



## B260 - RAISED EDGE TRIM

Deep raised edge trim that directs water away from the edge and prevents water run off.

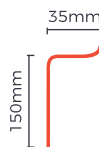
B260



## C100 - SIMULATED LEAD FLASHING

Lead simulation trim designed to replace traditional lead flashing.

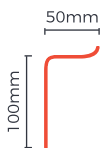
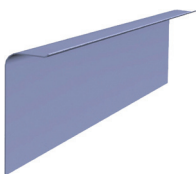
C100



## C150 - SIMULATED LEAD FLASHING

Lead simulation trim designed to replace traditional lead flashing.

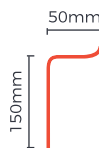
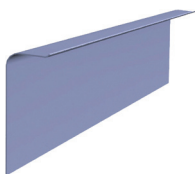
C150



## C100L - SIMULATED LEAD FLASHING

Long leg simulated lead trim designed for deep wall penetration.

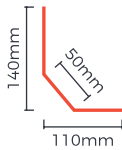
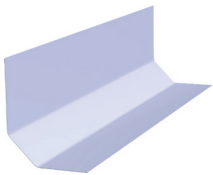
C100L



## C150L - SIMULATED LEAD FLASHING

Long leg simulated lead trim designed for deep wall penetration.

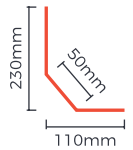
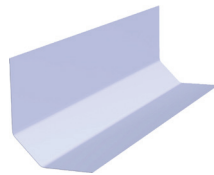
C150L



## D260 - FILLET TRIM

An arris style fillet trim for use against abutting walls as an upstand to guide water away.

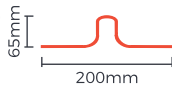
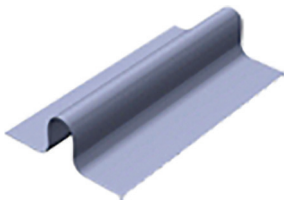
D240



## D300 - FILLET TRIM

Extra wide arris style fillet trim for use against abutting walls as an upstand to guide water away.

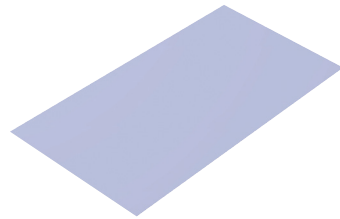
D300



## E280 - EXPANSION JOINT RIDGE

Designed for expansion on large roofs and to create rolls on any ridge details.

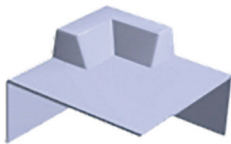
E280



## F300 - FLAT SHEETING

Flat trim that can be used as continuous flashing under slates, gutter lining or on a parapet.

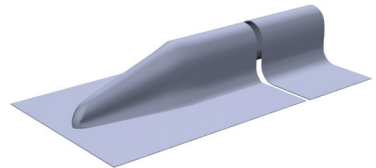
FTF300



## C1 - UNIVERSAL EXTERNAL CORNER

For use with A and B trims to form a corner on the roof edge.

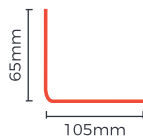
C1



## C5 - RIDGE CLOSURE

Roof ridge closure for use with E280 expansion joints.

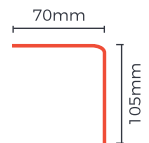
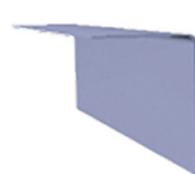
DECC5



## AT195INT - INTERNAL ANGLE TRIM

Angle trim with an inner high adhesion surface for use as upstands.

INTAT195



## AT195EXT - EXTERNAL ANGLE TRIM

Angle trim with an outer high adhesion surface for use as upstands.

EAEX195



## BUCKETS

For mixing resin and topcoat.

1L  
5L  
10L

MB1L  
MB5L  
MB10L



## DISPENSER

Safety dispenser for catalyst with measurement guide.

15ml  
80ml

CM15ML  
CML



## SLATE GRANULES

Rolled into the topcoat to provide a coarse non-slip finish.

1kg

GRPD51



## LAMINATING BRUSH

For detail work and bandaging.

1"  
2"  
3"  
4"

BG31  
BG32  
BG33  
BG34



## ROLLER REFILL

Specialty design to work with GRP.

4"  
6"  
7"  
10"

NRR4  
NRR6  
NRR7  
NRR10"



## ROLLER FRAME

For use with roller refills.

4"  
6"  
7"  
10"

NRF4  
NRF6  
NRF7  
NRF10



## PADDLE ROLLER

Paddle roller designed for consolidating resin into the mat.

4"  
6"  
9"

BB4  
BB6  
BB9



## BUBBLE BUSTER

Bubble buster designed for consolidating resin into the mat.

4"  
6"  
9"

BBV4  
BBV7  
BBV9



## CONCRETE PRIMER

For use as a primer for preparing concrete substrates or other unstable backgrounds.

5L (Coverage: 10m<sup>2</sup>)

GRPG4



## DISPOSABLE GLOVES

Single use for protection against GRP chemicals.

Large  
Large (Powder free)

GLOVES\_LARGE  
GLOVES\_FREE\_LA



## DUST MASK

Valved mask respirator for low to average toxicity.

One Size

DUSTMASK2



## SAND PAPER: 40 GRIT

High quality sand paper for keying and improving roof finish.

100mm x 50m

SP/40G/YELL/ALI/OX



## DIAMOND GRP 10M<sup>2</sup> ROOF KIT

The kit contains materials for the coverage of a 10m<sup>2</sup> roof or 12m<sup>2</sup> laminate.

Products included:

- 18kg Resin
- 5kg Topcoat (Grey)
- 1L Catalyst
- Bandage
- Disposable Gloves
- Chopped Strand Mat  
*(12m<sup>2</sup> - packed separately)*

You will also need:

- Tools & Ancillaries
- OSB3
- Trims
- Acetone

## COLOUR

Diamond GRP Topcoat is available in RAL colour: 7024.

Where an alternative RAL coloured topcoat is required, a colour pigment will need to be added to the clear topcoat.  
(20kg topcoat requires approx. 2kg of pigment).



# PERMAVENT.CO.UK

**PERMAVENT**

A: 11 Cumberland Drive, Granby Industrial Estate, Weymouth, Dorset, DT4 9TB  
T: +44 (0) 1305 766 703 F: +44 (0) 1305 766 704 E: [info@diamondgrp.co.uk](mailto:info@diamondgrp.co.uk)